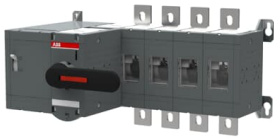




 PRODUCT-DETAILS

OTM630E4M230C

OTM630E4M230C MOTORIZED SWITCH



General Information

Extended Product Type	OTM630E4M230C
Product ID	1SCA115357R1001
EAN	6417019477275
Catalog Description	OTM630E4M230C MOTORIZED SWITCH
Long Description	4-pole, motor operated, base mounted switch-d disconnecter with handle for manual operation, terminal bolt kit, handle and spare fuse storage clip and male connector for control circuit

Circular Value

End of Life Instructions	1SCC301140M0201
--------------------------	-----------------

Eco Transparency

Environmental Product Declaration - EPD	1SCC303099D0201
---	-----------------

Material Compliance

Conflict Minerals Reporting Template (CMRT)	9AKK108467A5658
REACH Declaration	1SCC011021D0201
RoHS Information	1SCC011020D0201
RoHS Status	Following EU Directive 2011/65/EU and Amendment 2015/863 July 22, 2019
Toxic Substances Control Act - TSCA	1SCC011025D0201

Ordering

Minimum Order Quantity	1 piece
Customs Tariff Number	85365080
Country of Origin	Finland (FI)

Popular Downloads

Data Sheet, Technical Information	1SCC301020C0201
Instructions and Manuals	1SCC303006M0205
Environmental Product Declaration - EPD	1SCC303099D0201
End of Life Instructions	1SCC301140M0201

Dimensions

Product Net Width	480 mm
Product Net Height	250 mm
Product Net Depth / Length	312 mm
Product Net Weight	14.9 kg

Technical

Rated Operational Current AC-21A (I_e)	(380 ... 415 V) 630 A (500 V) 630 A (690 V) 630 A (1000 V AC) 630 A
Rated Operational Current AC-22A (I_e)	(380 ... 415 V) 630 A (500 V) 630 A (690 V) 630 A
Rated Operational Current AC-23A (I_e)	(380 ... 415 V) 630 A (500 V) 630 A (690 V) 630 A
Rated Operational Power AC-23A (P_e)	(220 ... 240 V) 200 kW (400 ... 415 V) 355 kW (500 V) 400 kW (690 V) 630 kW
Conventional Free-air Thermal Current (I_{th})	$\Theta = 40\text{ °C}$ 630 A
Conventional Thermal Current (I_{the})	Fully Enclosed 630 A
Rated Impulse Withstand Voltage (U_{imp})	12 kV

)	
Rated Insulation Voltage (U _i)	acc. to IEC/EN 60664-1 1000 V
Rated Operational Voltage	Main Circuit 1000 V
Rated Short-Circuit Making Capacity (I _{cm})	(690 V) 80 kA
Rated Short-time Withstand Current Low Voltage (I _{cw})	for 1 s 20 kA
Rated Conditional Short-Circuit Current (I _{nc})	(800 A fuse, 500 V) 100 kA (800 A fuse, 690 V) 80 kA
Motor Operational Voltage	220 ... 240 V AC
Power Loss	at Rated Operating Conditions per Pole 25 W
Pollution Degree	3
Handle Color	Black
Handle Type	Direct mounted handle
Fourth Pole Position	Right Side
Fourth Pole Type	Switched - Simultaneous Function
Switches Operating Mechanism	Mechanism at the End of the Switch
Distance Between Phases	Standard
Position of Line Terminals	Top In - Bottom Out
Operating Mode	Front operated
Standards	IEC 60947-3
Special Functions	No
Mounting Type	Base mounting
Number of Poles	4
Degree of Protection	Front IP00
Terminal Type	Lug terminals
Tightening Torque	acc. IEC 60947-1 50 ... 75 N·m
Mechanical Durability	10000
Lock Type	Yes

Technical UL/CSA

Tightening Torque	acc. IEC 60947-1 50 ... 75 N·m
-------------------	--------------------------------

Certificates and Declarations

ATEX Certificate	No certification needed
Declaration of Conformity - CE	1SCC301199D0202
UL Certificate	No certification needed
VDE Certificate	No certification needed

Container Information

Package Level 1 Units	box 1 piece
Package Level 1 Width	310 mm
Package Level 1 Depth / Length	560 mm

Package Level 1 Height	330 mm
Package Level 1 Gross Weight	18.9 kg
Package Level 1 EAN	6417019477275

Classifications

Object Classification Code	Q
ETIM 8	EC000216 - Switch disconnector
ETIM 9	EC000216 - Switch disconnector (low voltage)
eClass	V11.1 : 27371403
WEEE Category	5. Small Equipment (No External Dimension More Than 50 cm)
E-Number (Finland)	3638151

Categories

Low Voltage Products and Systems → Switches → Motorized Switch-Disconnectors

